



CORINTHIA

LONDON

Above *and* Beyond

SEVEN EXCEPTIONAL PENTHOUSES

Above *and Beyond*

The Royal Penthouse	4
The Hamilton Penthouse	10
The Musician's Penthouse	16
The Writer's Penthouse	22
The Whitehall Penthouse	28
The Explorer's Penthouse	34
The Actor's Penthouse	40
Dining & Bars	46
Spa	53





London's *Magical* Grand Hotel



Nestled on the corner of Northumberland Avenue, the iconic Corinthia London is steeped in a storied history.

Originally known as the Metropole Hotel, its hallowed walls bear discreet witness to the tales (and secrets) of many illustrious residents and guests, from politicians to spies – real and imagined. This Whitehall legend may echo to a fascinating past, but its heart beats to the rhythm of the world's most contemporary and diverse city. The hotel welcomes a cosmopolitan mix of people and personalities.

Inside, the team of committed Corinthians ensures that each guest leaves feeling a little better and a little brighter. And be they local or global travellers, the hotel entertains its visitors with an irresistible spirit, inviting them to inscribe their own chapter in an unfolding story.

Corinthia London is a grand hotel with room to dream and the freedom to explore. Where big occasions are treated intimately, and small details feature large. From birthdays and weddings, family occasions and industry gatherings, quiet escapes and lively nights out, Corinthia is the setting for an artful tapestry of joy – a mosaic of emotional connections.

A charming sequence of captivating scenes wherein every guest assumes a leading role and secures pride of place in the hotel's affection. At Corinthia London, the simplest gestures make the biggest impression – life's 'unnecessary necessities'

This is why Corinthia doesn't just run a hotel. It makes moments that are meaningful and memorable. Or, as some might say, *moments of magic*.



The Royal Penthouse

A grand richly furnished residence, where our most discerning guests may reside in regal splendour.

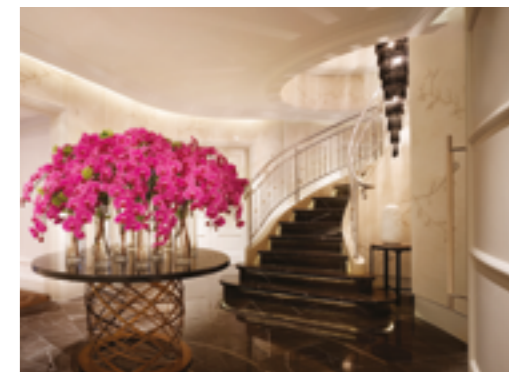


The Royal Penthouse

The ultimate London address offers a majestic array of features and facilities.

Spread over two floors connected by a private internal lift, The Royal Penthouse features an imposing entrance hall, an expanse of living space, a study and an oval 10-seat dining room.

Continuing the palatial theme, a grand staircase leads to two bedrooms with king-size beds and bathrooms of honey onyx and Skyros marble. Connecting doors open up the option of two further bedrooms.

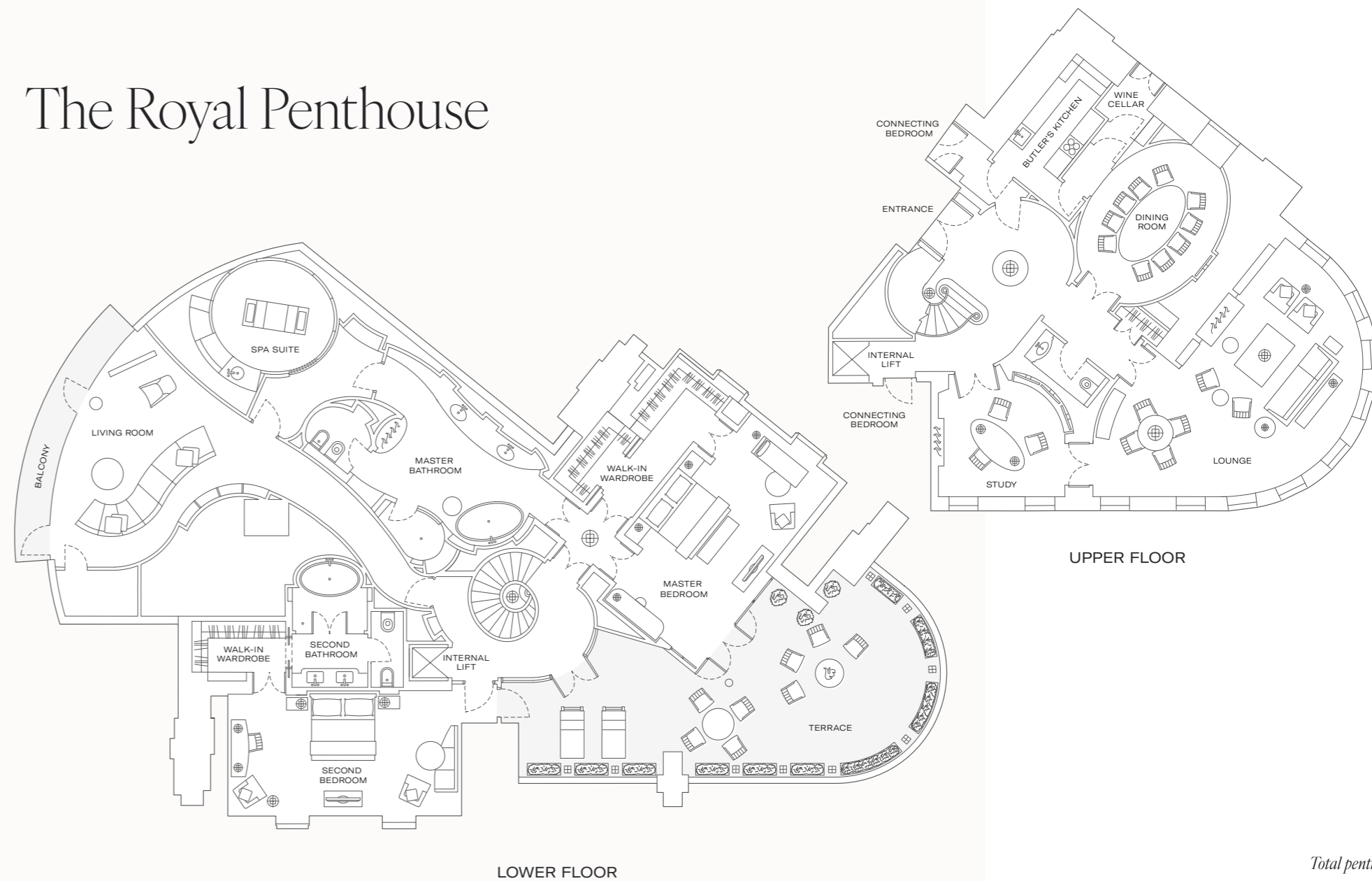


Standing on the roof terrace, taking in the unique 180° panoramic view of London, residents may believe they are monarchs of all they survey.

Stepping inside, this glorious feeling will continue.



The Royal Penthouse



Total penthouse size
5,000 SQ FT / 465 SQ M



The Hamilton Penthouse

In soft tones of cream, ivory and Champagne,
this elegant space is designed for gracious
living and glamorous entertaining.



The Hamilton Penthouse



Emma, Lady Hamilton, would approve of this refined residence. Today's residents will discover many more alluring features.

As a venue to welcome guests, the suite is impressively spacious... as a sanctuary from the bustle of the city, it is comfortably peaceful... and as a base to conduct the business of the day, it is wonderfully well-equipped.

On all occasions, in all seasons, the large roof terrace, complete with open fire and vitality bath, extends the space and opportunities for relaxation.

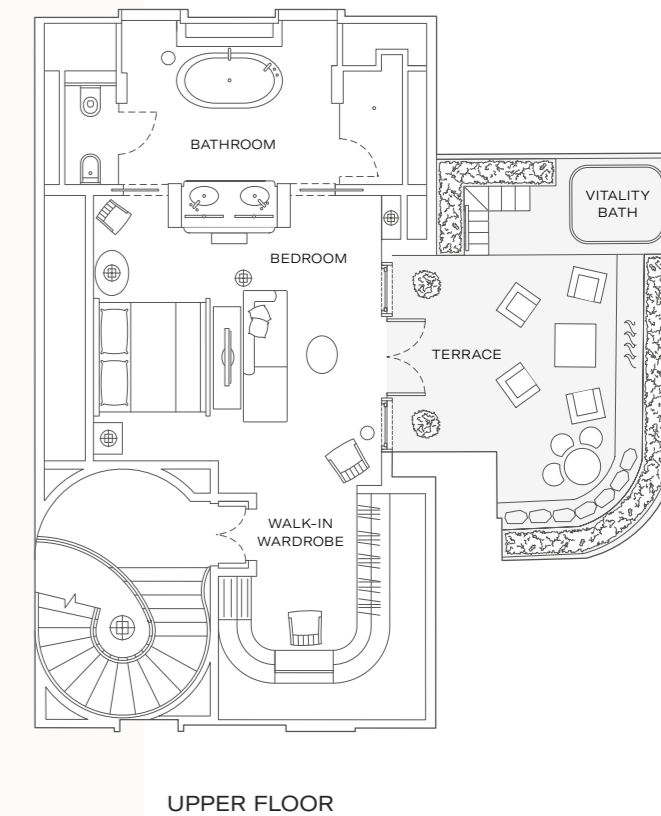
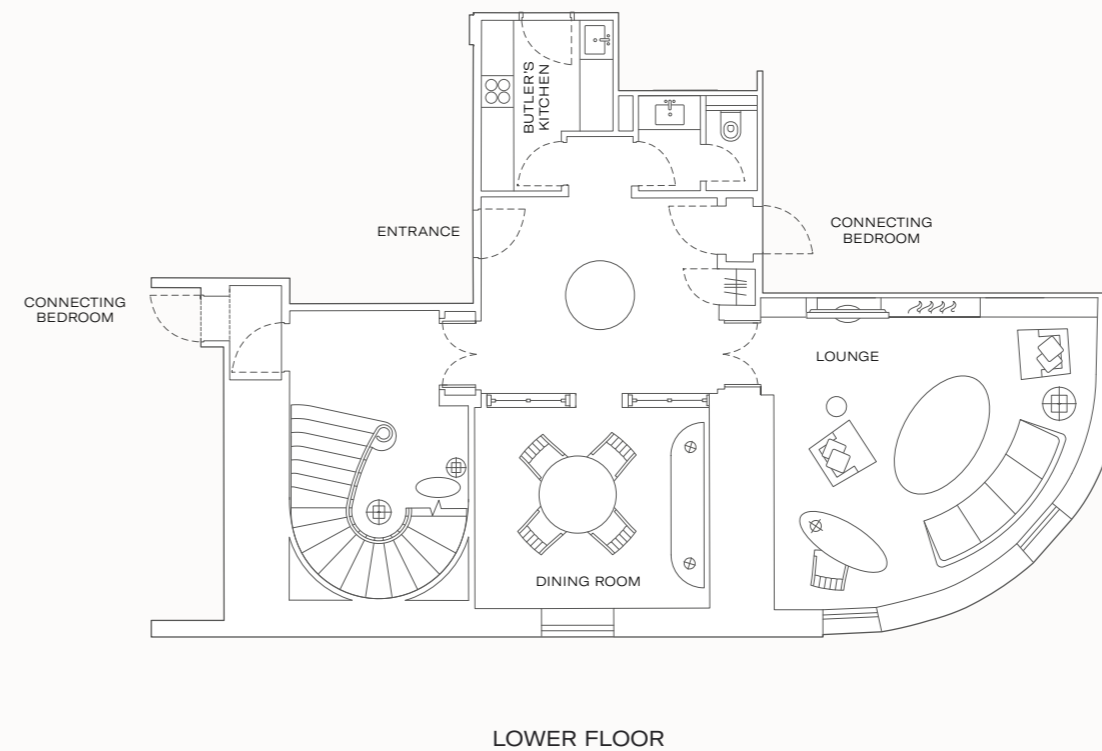


Emma, Lady Hamilton, would approve of this *refined residence*.

From her palatial bed, the Georgian beauty could gaze across the rooftops to Nelson's Column, where Horatio, her lover, stands.



The Hamilton Penthouse



Total penthouse size
2,205 SQ FT / 205 SQ M



The Musician's Penthouse

Sound and space are instrumental in the composition of this bold residence featuring a baby grand piano.



The Musician's Penthouse



Perhaps the spirit of Mantovani, resident conductor when this building was the famed Metropole Hotel in the '20s, lives on.

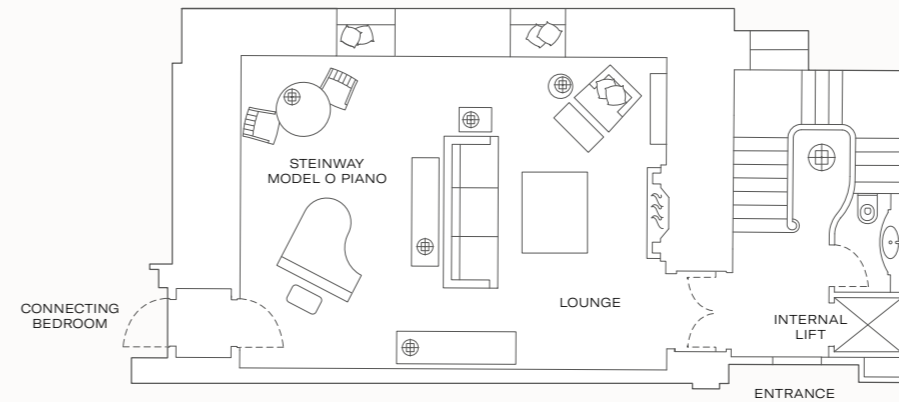
Certainly, the musical influences in this inspirational penthouse are real. A state-of-the-art record deck is on hand, the artwork has a musical slant and decorative features echo the swirls of crochets and quavers. Not that guests need musical talent to appreciate this grand residential space. On the contrary, any international traveller accustomed to fine living will feel at home here.

From the classic Steinway Model O piano to the credenza cocktail cabinet, every aspect of this penthouse suite has been *carefully orchestrated* to create a harmonious living and entertaining venue.

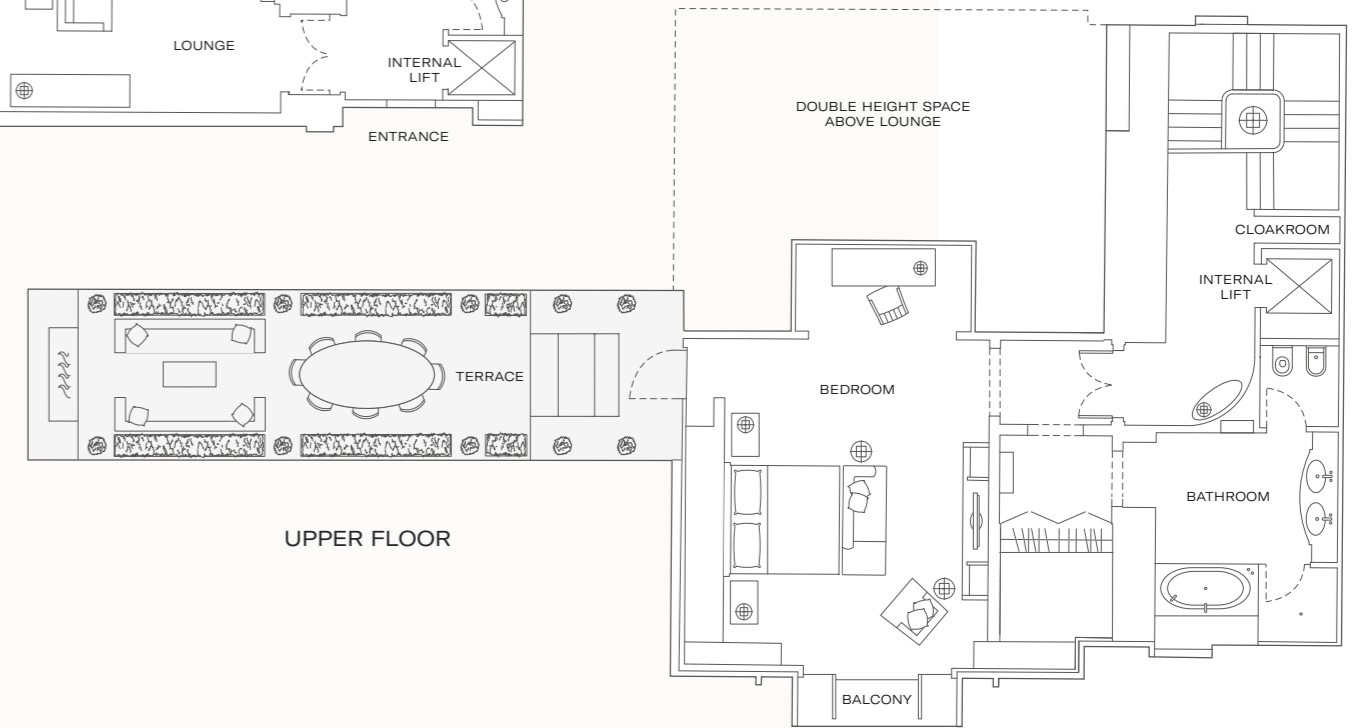




The Musician's Penthouse



LOWER FLOOR



UPPER FLOOR

Total penthouse size
2,475 SQ FT / 230 SQ M





The Writer's Penthouse

A literary gem. With a warm, welcoming aura,
This spectacular double-height space evokes
the style of a reading room.



The Writer's Penthouse



Not surprisingly, the desk occupies a premier position within the library-like lounge.

Custom-designed and crafted from dark walnut, the two-metre-long writing table features nickel metalwork details to the underside and high-quality leather inlay to the desktop.

Around the walls, hundreds of books add to the literary ambiance, complemented by artwork featuring handwritten letters.

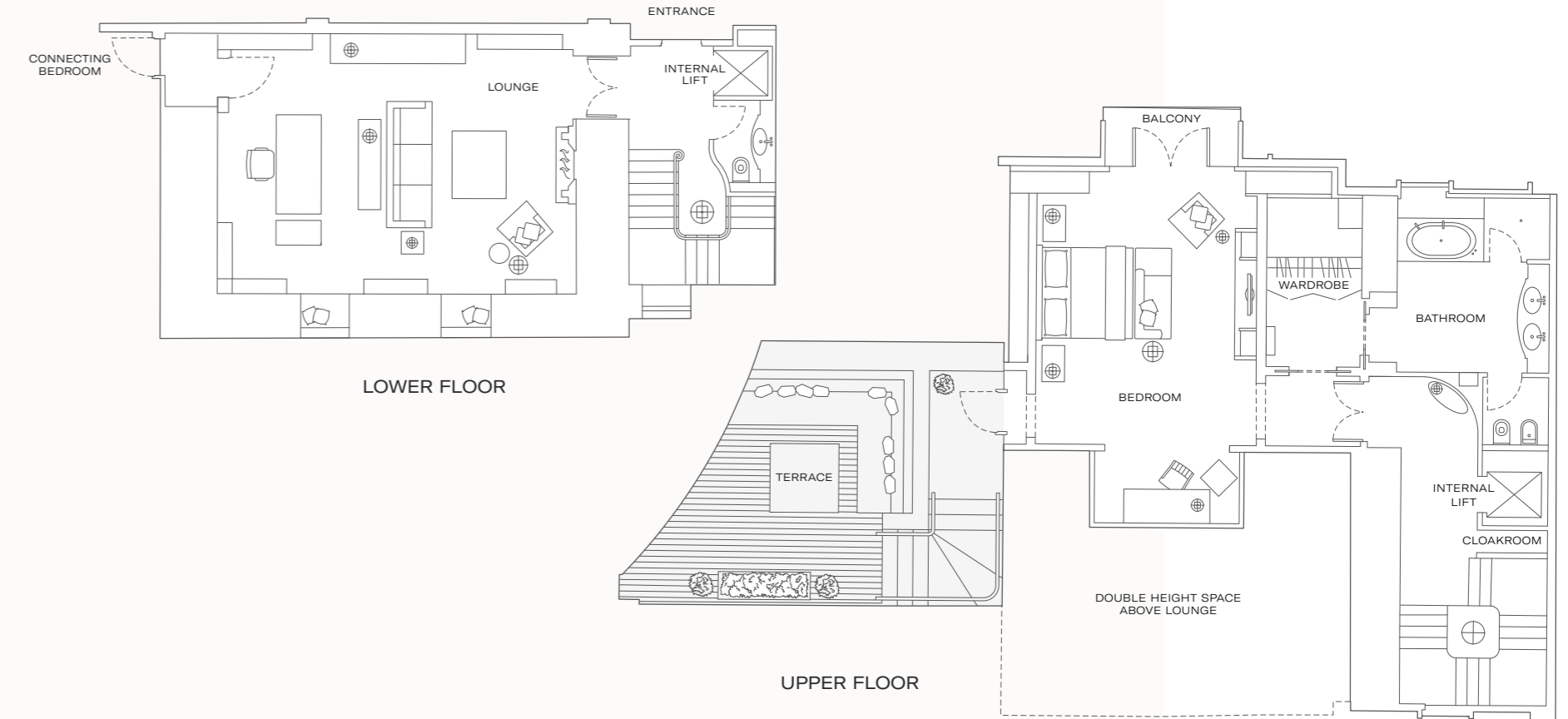


The next chapter. A postcard home.

In all its guises, the written word is celebrated here. Anyone who can write... *anything*... will be inspired by its comfortable charm.



The Writer's Penthouse



Total penthouse size
1,815 SQ FT / 170 SQ M



The Whitehall Penthouse

A statesmanlike sanctuary modelled on
the refined, understated world of the London
Gentlemen's club. Ladies welcome.



The Whitehall Penthouse



On Armistice Day, 1918, Winston Churchill stood at a window of this building watching the crowds celebrate below.

Would the great statesman feel comfortable in The Whitehall Penthouse today? We think so.

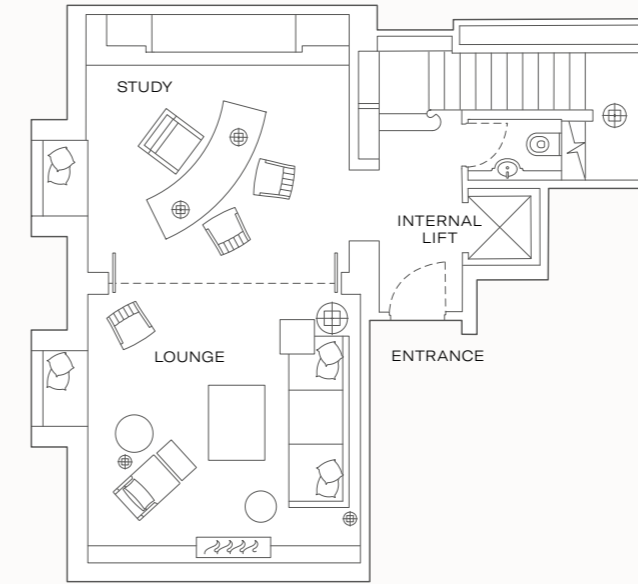
Certainly, he would appreciate the cigar humidor, the curved two-metre-long leather-topped desk and the high-tech communication system. He might also approve of the Savile Row-style dressing room and whisky bar.



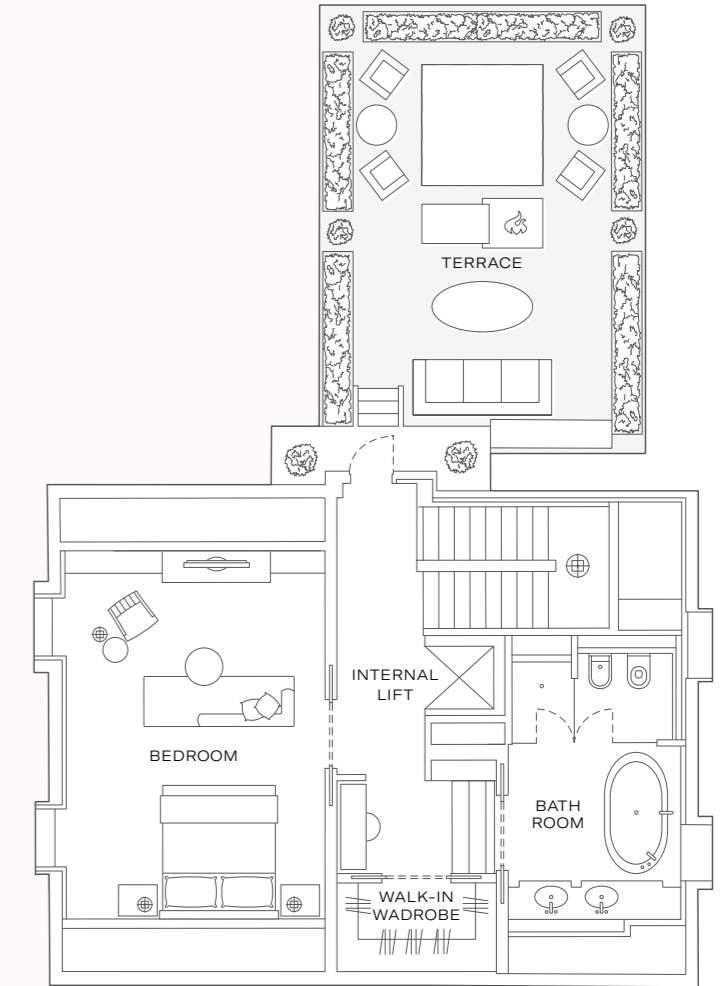
A private internal lift leads to a penthouse retreat designed for guests who habitually wield power and influence... particularly those in the habit of making decisions amid restrained, reserved grandeur.



The Whitehall Penthouse



LOWER FLOOR



UPPER FLOOR

Total penthouse size
1,745 SQ FT / 160 SQ M

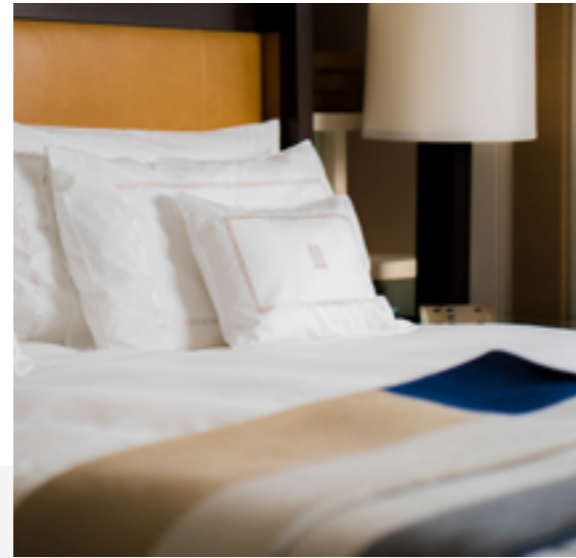


The Explorer's Penthouse

Forget the supplies, charts and compass.
This relaxing residence captures the
significant pleasure of staying at home.



The Explorer's Penthouse



Here, a sense of style counts for more than a sense of adventure.

Evoking the elegance of the British Empire and the Belle Époque, the contemporary penthouse is a safe haven of comfortable opulence.

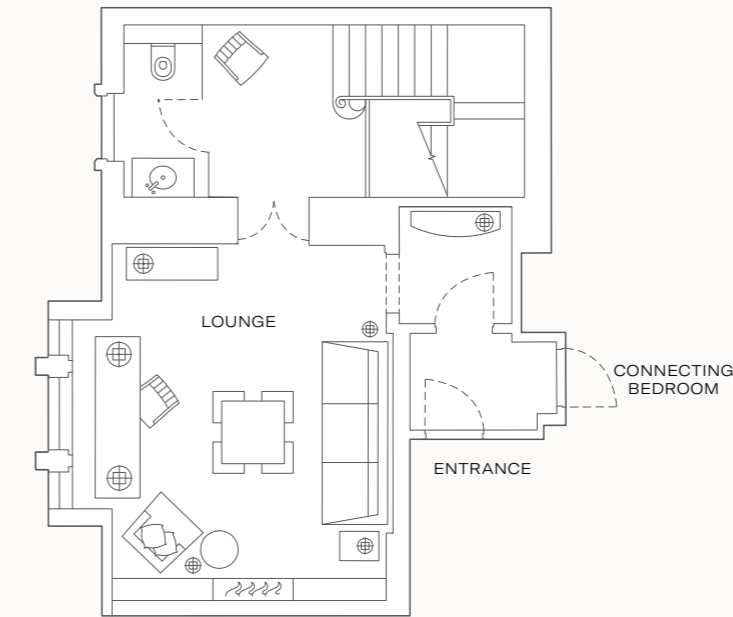
With generous living space, a private balcony and a sweeping staircase leading to the upper-floor master bedroom, the emphasis is on gracious, carefree living. In the bathrooms, Crema Perla limestone floors and walls blend with Calacatta Oro marble surfaces to complete the picture of unrestrained luxury.



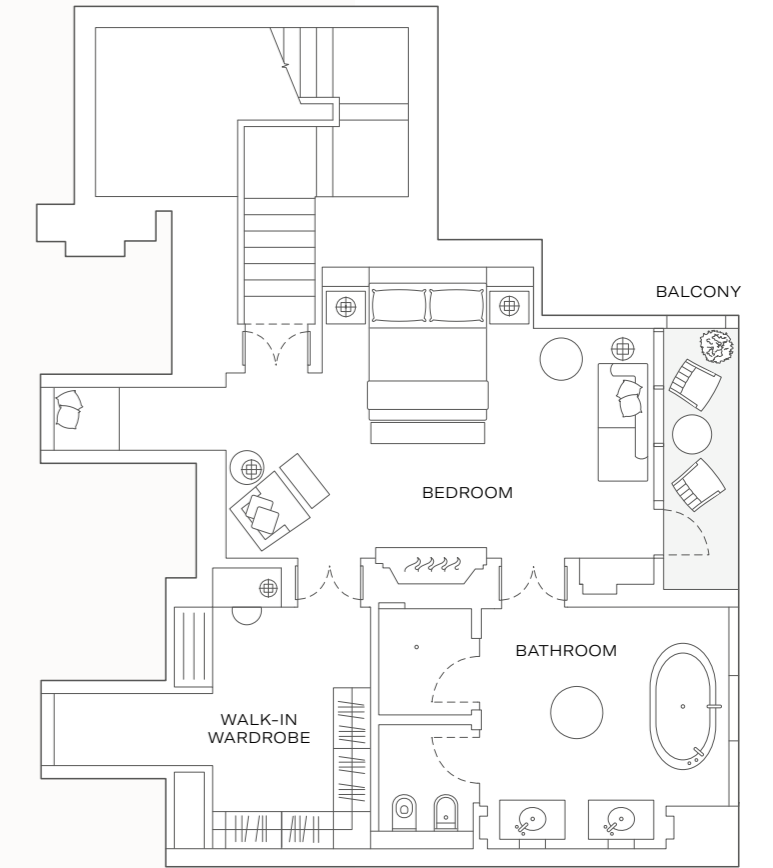
A trek to the outer reaches of Knightsbridge. A journey downriver. An expedition to the hidden corners of Hyde Park. Few base-camps are as luxuriously well-equipped as The Explorer's Penthouse.



The Explorer's Penthouse



LOWER FLOOR



UPPER FLOOR

Total penthouse size
1,230 SQ FT / 115 SQ M



The Actor's Penthouse

The action takes place on location, in an elegant penthouse suite. There is no script or plot...
The players are free to improvise.

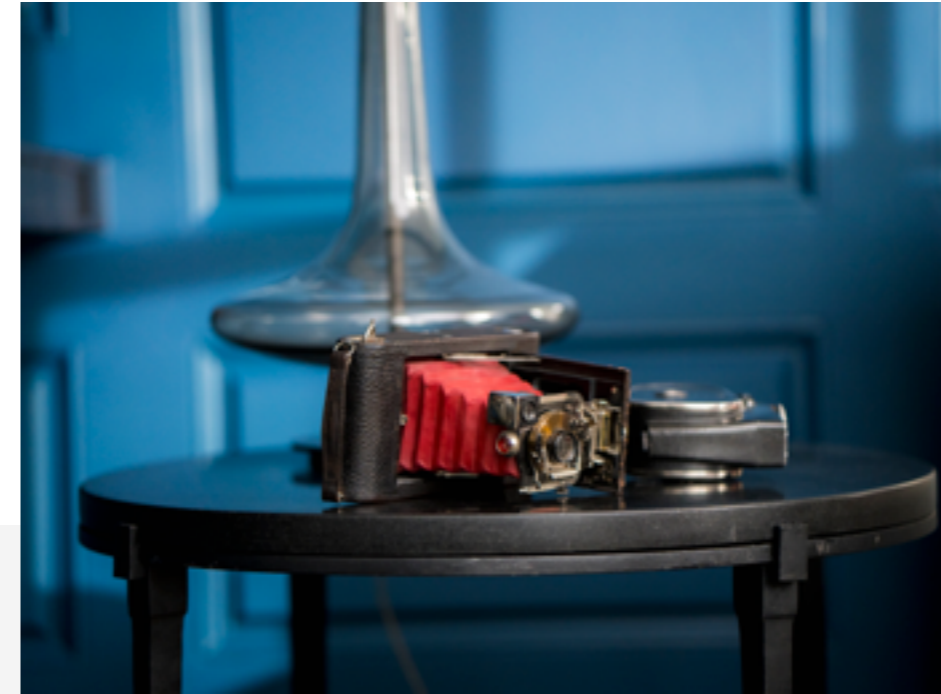


The Actor's Penthouse



The scene is a sumptuous suite with an elegant oak-panelled lobby, spacious lounge and sweeping staircase leading to a generous bedroom, bathroom and dressing area.

From the blue-painted raised and fielded panelling to the deep, soft sofa, the designer's artistic eye is apparent. This is no stage or film set, however, but a comfortable, welcoming residence with fully operational fireplaces, granite bathrooms and a private balcony. Practical, stylish lighting, dark parquet flooring and hand-finished rugs add real warmth and luxury-living ambiance.

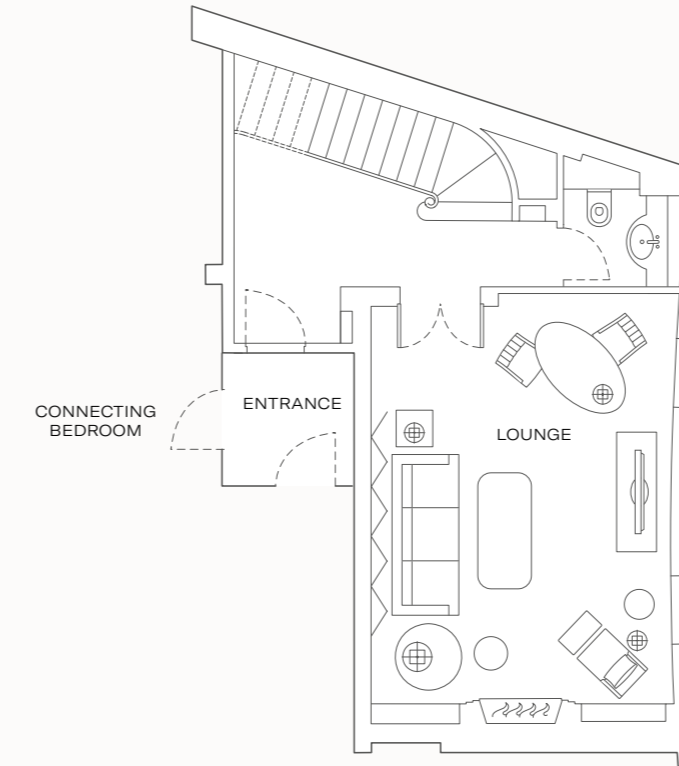


No audition required.
No acting experience necessary.

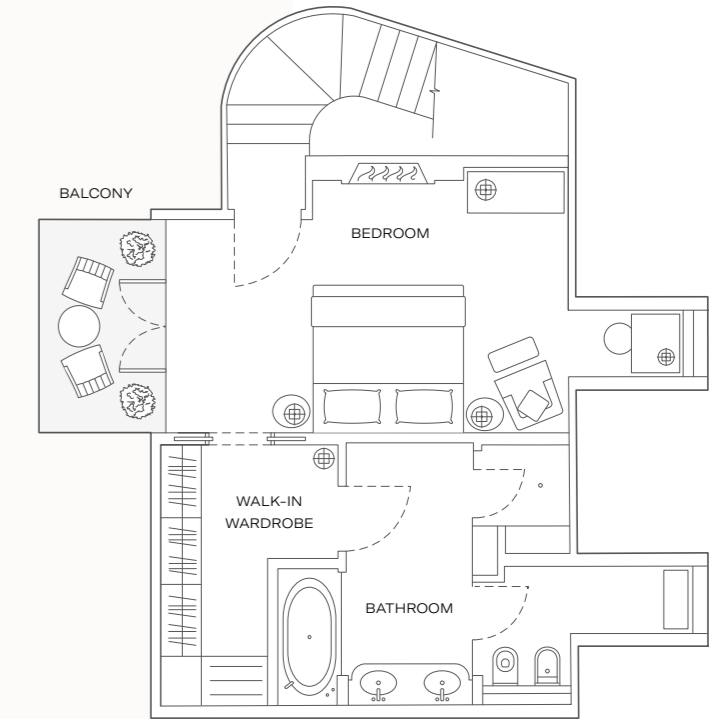
The Actor's Penthouse is available
to any guest accepting the role
of 'Sophisticate about Town'.



The Actor's Penthouse



LOWER FLOOR



UPPER FLOOR

Total penthouse size
1,075 SQ FT / 100 SQ M



Dining & Bars

Where afternoon tea is an indulgent ceremony, and classic dishes are refined and reborn under the eye of world-renowned chefs, Corinthia London is a gourmand's paradise. And don't forget to indulge in a little late-night hedonism - our bars are waiting.



Corinthia London is also home to five drinking and dining venues buzzing with local luxurians and international clientele alike.

Choose from The Garden, where you can tuck into Mediterranean cuisine in stunning surroundings, Kerridge's Bar & Grill is the first London restaurant of Michelin-starred chef, Tom Kerridge, serving classic British dishes. You can also enjoy luxurious afternoon tea in The Crystal Moon Lounge, illuminated by a 1,001 crystal chandelier.

For exquisite cocktails and live music, our Champagne and cocktail bar Velvet is the ultimate destination while The Northall Bar's elegant surroundings provide the perfect backdrop to a post-meeting apéritif.

Kerridge's Bar & Grill

Kerridge's Bar & Grill offers an elegant eatery where the menu pays homage to classic dishes and traditional techniques. Kerridge creates a culinary experience that celebrates the true essence of British cuisine.

Renowned British chef Tom Kerridge has a reputation for serving his own take on the UK's most celebrated dishes. He became the first chef to receive two Michelin stars for a gastropub, The Hand and Flowers, and one Michelin star for The Coach, both located in Marlow. Kerridge also makes regular TV appearances on shows like Great British Menu, Master Chef and Saturday Kitchen.



I always knew it would be a happy marriage

TOM KERRIDGE



Velvet by Salvatore Calabrese

Under Calabrese and experienced bar manager Christian Maspes, this late-night bar brings back the theatrics to cocktail-making.

Inspired by the roaring twenties, Calabrese aims to delight guests with craft and passion in what he terms: The Music of the Shake. The award-winning interiors by David Collins Studio present glamour and opulence throughout.

Drinks expert and award-winning global powerhouse Salvatore Calabrese (aka "The Maestro") is a bestselling author of 10 books and a former President of the United Kingdom's Bartenders' Guild. Salvatore has long been a consultant to the bar industry and selected brands, sharing his passion for the art of mixology with the world.

The music of *the shake.*

SALVATORE CALABRESE





The Northall Bar

A Grand Hotel requires a grand bar. This is ours...

A place to meet for a glass of Champagne, wine or beer, or to sip an aperitif or classic cocktail. Satisfying appetites as well as quenching thirsts, the bar also serves sharing dishes of British cheeses and charcuterie.



The Garden

An oasis in the heart of the city, made for alfresco dining.

Arguably London's best kept secret. A rare outdoor oasis in the heart of the city offering immersive dining experiences every season. Enjoy an enticing Mediterranean menu during the summer season, and a trip to the Alps during the winter months.





The Crystal Moon Lounge

Afternoon tea is taken seriously at Corinthia London.

Less convenient refreshment and more a fragrant ceremony to grace, charm and tradition. A slowly unfolding pleasure that must never be hurried. A delightful reminder that time is a luxury to be savoured. And ours is taken in a light-drenched lounge, illuminated by the warming glow of 1,001 Baccarat crystals.





Spa

Set in a space of iconic beauty, ESPA Life at Corinthia is quite simply the Next Generation of Spa.

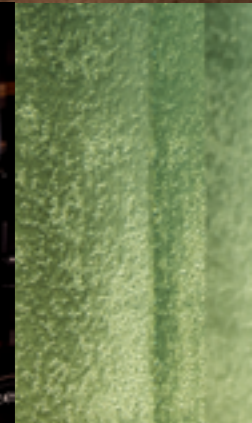




ESPA Life at Corinthia

ESPA Life excels at offering a fully integrated approach to wellbeing, bringing together a team of the world's top experts to offer an unrivalled choice of spa, complementary alternative therapies, fitness, beauty treatments and Daniel Galvin Hair Salon.

Spread over four floors, the spa features 17 treatment rooms, a private spa suite, nail studio, indoor swimming pool, vitality pool, amphitheatre sauna, ice fountain, marble heated loungers and private sleep pods. The Spa Lounge complements the overall offering by serving light, nutritious refreshments, while AMP's approach to fitness is centred around Small Group Personal Training (SGPT) and specialising in elite coaching.





WHITEHALL PLACE, LONDON SW1A 2BD, UK
LONDON@CORINTHIA.COM +44 20 7321 3032

[CORINTHIA.COM/LONDON](https://www.corinthia.com/london)